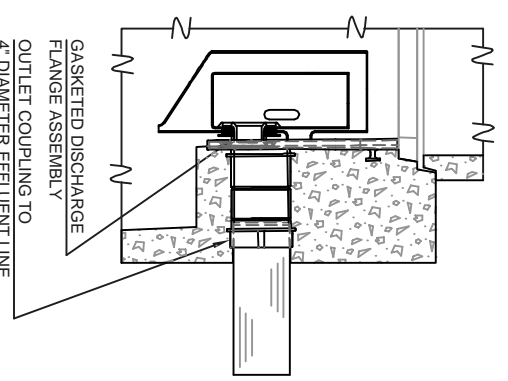
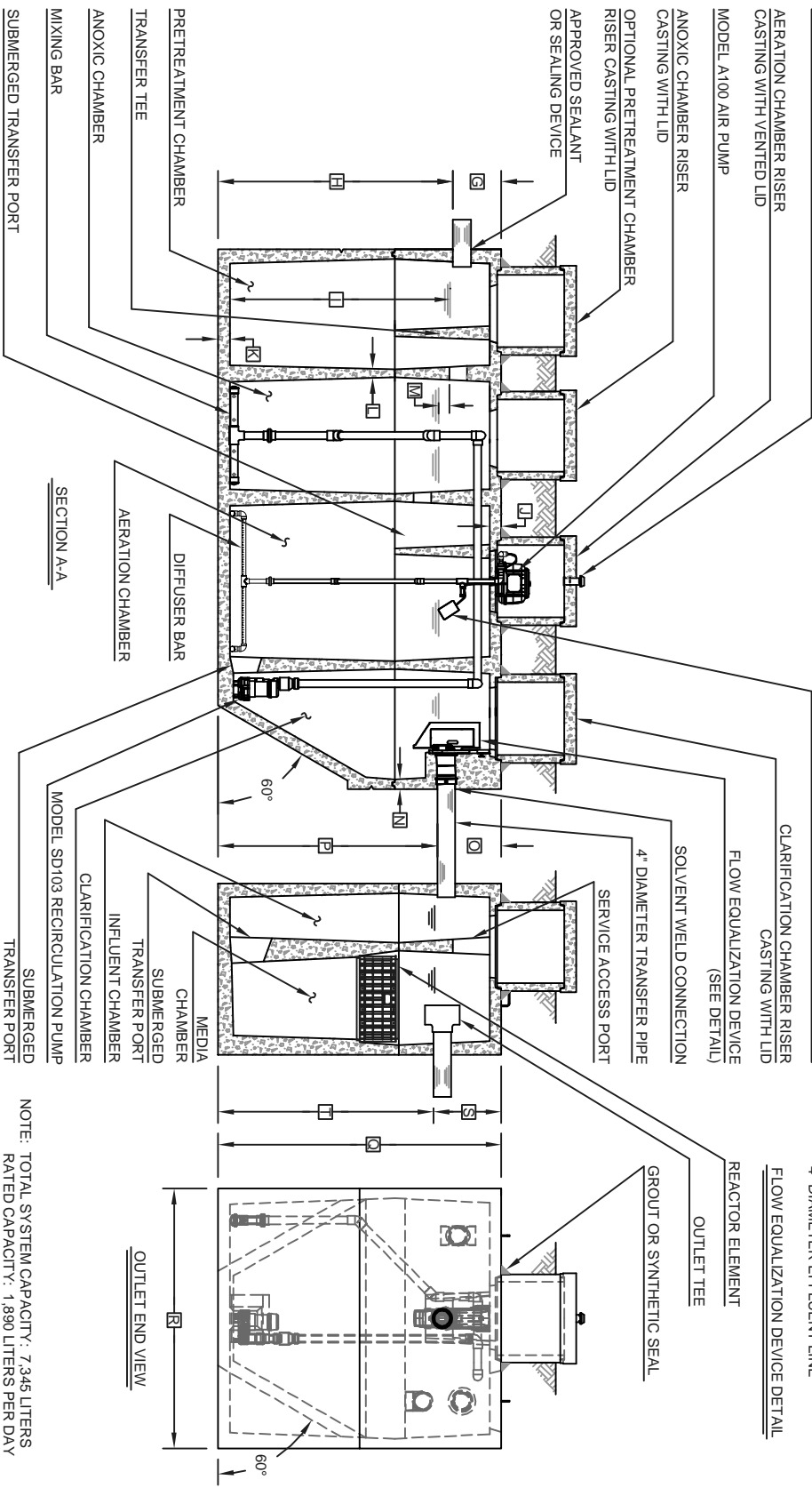


PLAN VIEW



FLOW EQUALIZATION DEVICE DETAIL



SECTION A-A

OUTLET END VIEW

GENERAL NOTES:

- ① FALL THROUGH THE HYDRO-KINETIC® PLANT FROM INLET INVERT TO OUTLET INVERT IS FIVE INCHES. INLET INVERT IS TWELVE INCHES BELOW TANK TOP.
- ② ON DEEPER INSTALLATIONS, PRECAST RISERS MUST BE USED TO EXTEND CASTINGS TO GRADE. INSPECTION COVERS MUST BE DEVELOPED TO WITHIN TWELVE INCHES OF GRADE.
- ③ TANK REINFORCED PER ACI STD. 318.
- ④ REMOVABLE COVERS ON RISERS WEIGH IN EXCESS OF SEVENTY-FIVE POUNDS EACH TO PREVENT UNAUTHORIZED ACCESS.
- ⑤ AIR PUMP MAY BE MOUNTED INSIDE THE RISER ABOVE THE AERATION CHAMBER OR MAY BE REMOTE MOUNTED UP TO 100 FEET FROM TANK.

CERTIFIED BY NSF INTERNATIONAL T CAN/BNQ 3680-600 TREATMENT LEVE CLASS B - III, D - I - N - I

PROJECT ENGINEER'S APPROVAL:
I (WE) HEREBY CERTIFY THAT THIS DRAWING HAS BEEN CHECKED AND IS APPROVED.

DATE: _____
NAME: _____

CONTRACTOR'S CERTIFICATION:
I (WE) HEREBY CERTIFY THAT THIS DRAWING HAS BEEN CHECKED AND IS APPROVED.

DATE: _____
NAME: _____

CRITICAL DIMENSIONS

A	1'-0"	N	0'-2 1/2"
B	2'-4"	O	1'-4"
C	2'-5 1/2"	P	4'-8"
D	3'-4 1/2"	Q	6'-0"
E	2'-4"	R	5'-6"
F	1'-5"	S	1'-5"
G	1'-0"	T	4'-7"
H	5'-0"	U	3'-7 1/2"
I	4'-8"	V	4'-8"
J	0'-3"	W	0'-3"
K	0'-3"	X	0'-3"
L	0'-2"	Y	0'-2"
M	0'-3"	Z	0'-3"

U.S. AND FOREIGN PATENTS PENDING

norweco

HYDRO-KINETIC®
WASTEWATER TREATMENT SYSTEM

MODEL 1890L-4M

DATE: 09-05-2

PC-5-1131

NOTE: TOTAL SYSTEM CAPACITY: 7,345 LITERS RATED CAPACITY: 1,890 LITERS PER DAY