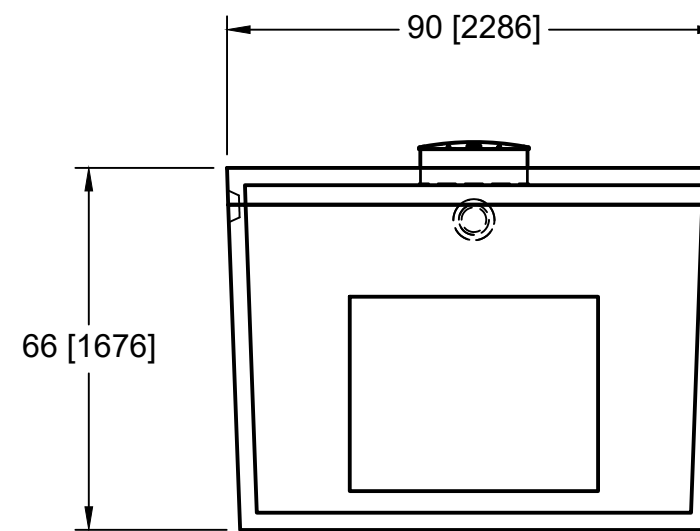
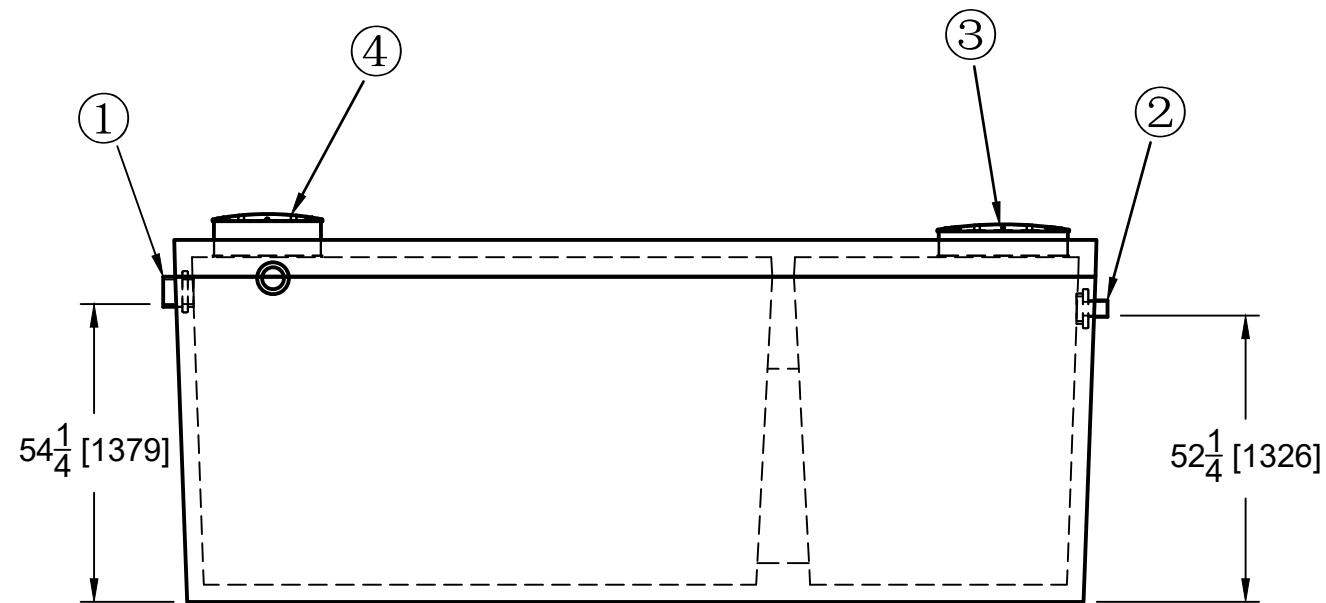


Burial Depth: max 3m on top of tank away from vehicular traffic

Mix Design Sulphate resistant concrete. Water/Cement ratio .45 or less. Strength: 32-35 mPa @ 28 days  
Air Entrainment: 5-7 %  
Steel to CSA CAN A23.1  
CPA certified-meets CSA B66

Joints: Top of sides poured rough and wwf inserted to allow secondary pour to bond

Sides / Bottom: tufstrand fibre reinforcement dosed at 3kg/m3  
Top: 10m and 15m rebar longitudinally max 10" ct, 1" cover  
10m rebar laterally max 12" ctc 1" cover



Top Weight  
tons  
Bottom Weight  
tons  
Assembled Weight  
13.5 tons

9000L (2000gal)  
Pump Chamber

- 1: 4" Inlet rubber
- 2: 2" Outlet rubber
- 3: 24" Diameter polylok riser
- 4: 20" Diameter polylok riser